



Electrical Distribution

Housing

Extract of Catalogue
Low Voltage Energy

MICHAUD



60 YEARS EXPERTISE

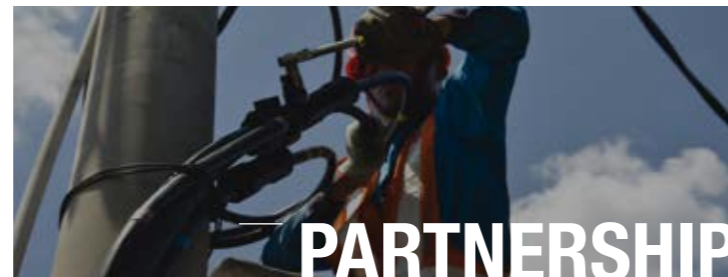
MICHAUD is a French industrial group specialised in energy distribution networks for more than 60 years.

MICHAUD Export, subsidiary dedicated to international markets, develops and sells solutions according to applicable standards thanks to its know-how as well as its relationships with local users.

-  60 Million €
-  + 70 countries
-  70 protected innovations yearly
-  10 locations
-  + 250 employees
-  + 8 000 references
-  10 million € stock value
-  20 million products leaving factories yearly

PRESCRIPTION & DIAGNOSIS

A strong market understanding and a recognised technical knowledge to serve your projects in order to propose suitable solutions.



INNOVATION & QUALITY

Investing near 8% of the turnover in R&D, we develop tomorrow's solutions and guarantee quality and reliability of products thanks to a COFRAC and ASEFA accredited and independent test laboratory (accreditation n°1-0579 / www.cofrac.fr).



FITTERS TRAINING

As preferred technical partner, we encourage learning and knowledge transmission together with product commercialisation.



According to the international standards, Michaud Export designs and develops energy distribution solutions. The product range is focused on two fields of expertise:

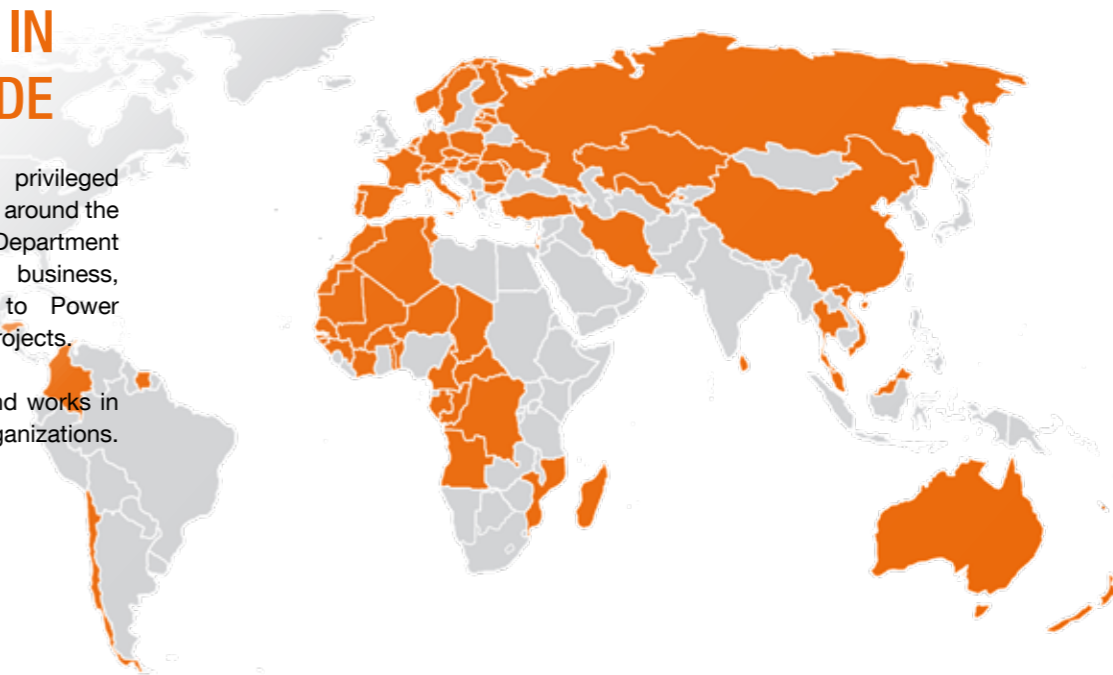
- **Low Voltage Network:** to connect and protect the overhead and underground electrical lines ;
- **Energy Controlling:** to manage and offer easy access to electricity.



+70 PARTNERS IN THE WORLD-WIDE

MICHAUD benefits from a privileged collaboration with many partners around the world. Thanks to an engineering Department dedicated to international business, MICHAUD provides support to Power Utilities in their grid expansion projects.

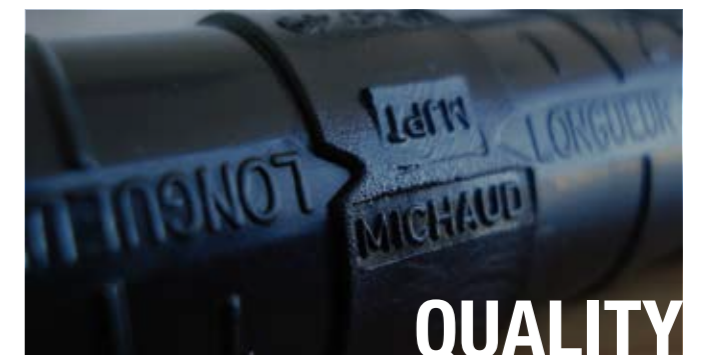
Besides, MICHAUD supports and works in partnership with power sector organizations.



PRODUCTS BRANDS

MICHAUD
HABITAT ET RÉSEAU ÉLECTRIQUE

MIPROTEC
PROTECTION ET INSTALLATION



QUALITY

PROTECTION



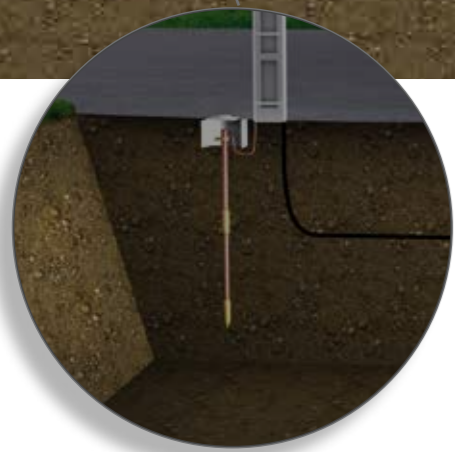
HOUSING



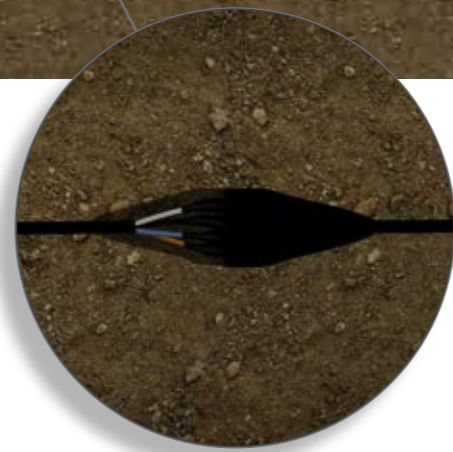
OVERHEAD



MICHAUD



EARTH SYSTEM



UNDERGROUND



INSTALLATION

Specialised in electrical distribution, MICHAUD develops its expertise with the arrival of Smart Meter, offering **solutions for the counting environment and protection.**



Evolution in the housing field: Smart Meter

Due to the evolution of european specifications for **Smart Meter systems**, it is necessary to assist meters manufacturers or distribution networks operators.

The Smart Meters roll out requires an adaptation of residential installations. MICHAUD invests to make the change easier by developing solutions **suited for current installations and ready to receive new counting solutions.**

Thanks to its expertise and engineering, MICHAUD proposes **custom-made solutions** to better suit the project.

The benefits



Anticipate and facilitate transition towards Smart Meter



Reduce intervention time as well as electricity supply cut time

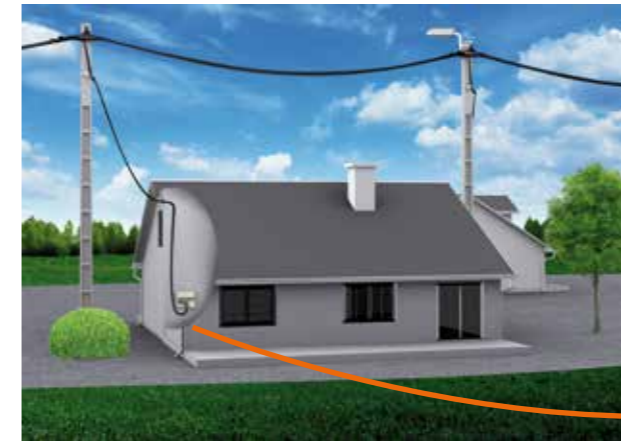


Minimise roll-out cost

Adaptation to new counting systems

In this scalable environment, the development of **universal solutions** enables better preparation for change according to evolution of Smart Meter technology.

Thanks to its skills and its expertise, MICHAUD was a pioneer regarding the design of insulation piercing end connector. It is a solution for universal connection between service cable and board terminals enabling to realise safe connection between aluminium and copper.



Characteristics

Connection between the aluminium service cable and the copper board terminal.

Cable tail flexibility and small end connector bulk.

Possible tail extension.

Assets

- + No electrolytic corrosion phenomenon
- + Easier fitter work in confined space
- + Easy renovation

Available end connectors types

Type	Normative rating
Insulation piercing end connector EBCP 6-35 EBCP: Insulation piercing end connector	EBCP 6-35/16 — Tail section (16 or 25) Leading-in conductor mini and maxi capacity
Insulation piercing end connector EBCP 16-50 Leading-in conductor minimum section	16 - 50 SECT — Sectoral or round shape of leading-in conductor Leading-in conductor maximum section
Reversible stripping end connector EBCD 6-35 EBCD: Reversible stripping end connector	EBCD 35-25 — Tail section Leading-in connector maximum section

Floor supply box S31

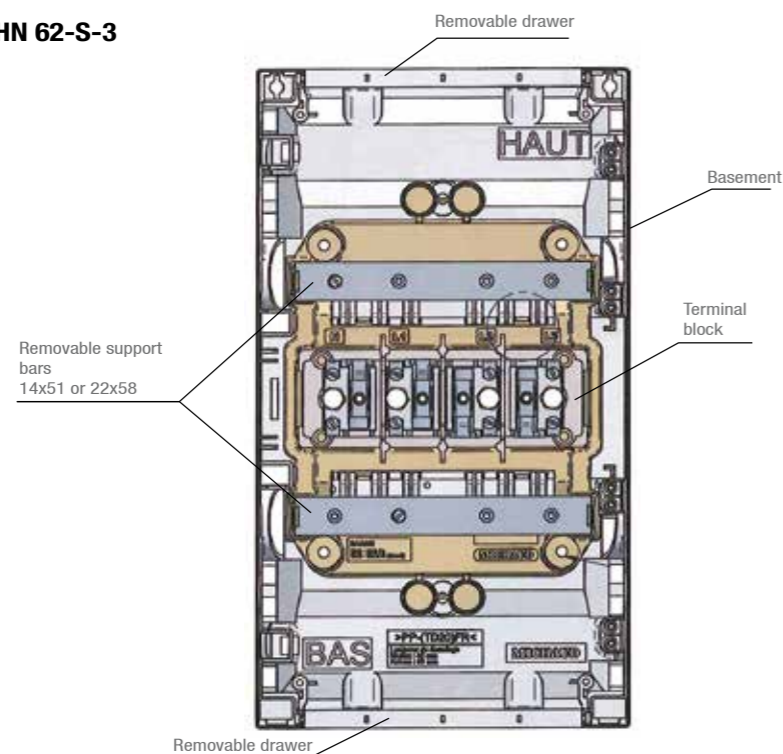


Utilisation

The 200A floor supply box allows 6 single-phase service connections or 2 three-phases service connections from a electrical column. It can be install vertically or horizontally.

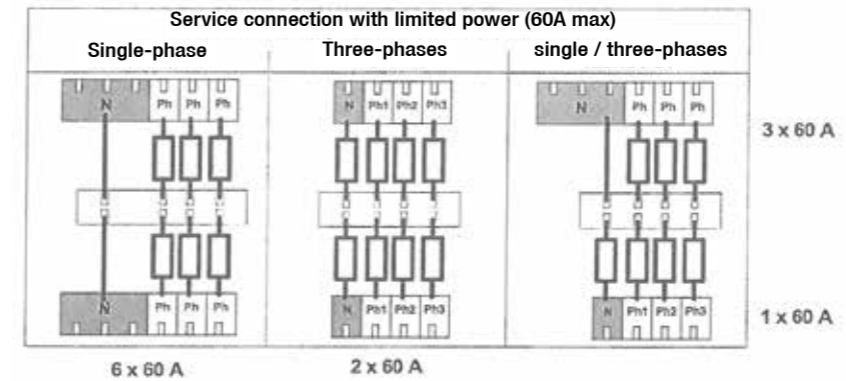
Description

- The floor supply box is made of a basement with cover in synthetical material, 2 base support bars and a terminal block.
- The protection degree is IK10.
- The principal terminal block is removable and allows a bare connection for conductors 25 to 95 mm² Cu, or a bar from 24 mm² to 96 mm².
- The tightening of the terminal blocks is done with a insulated 6mm socket wrench.
- The floor supply box can receive fuse holder (14x51 or 22x58).
- Floor supply box allows 6 single-phase service connections or 2 three-phases service connections with a power limit of 45kVA.
- It was designed with **HN 62-S-3** standards.



Code	Designation	Dimensions (mm)			Sales unit
		L	I	H	
K540	FLOOR SUPPLY BOX S31	430	235	165	1

Configuration



Accessories

- Fuse holders are available in two different sizes :
 - * 14x51 for fuse cartridge AD 15 and 30A,
 - * 22x58 for fuse cartridge AD 30, 45 and 60A.
- They are equipped with connection leg which allows the connexion before supplying the floor supply box.
- The triple neutral allows until 3 neutral taps thanks to its 3 independent terminal blocks.



Code	Designation	Sales unit
K541	FLOOR SUPPLY BOX FUSE HOLDER 14x51	1
K542	FLOOR SUPPLY BOX FUSE HOLDER 22x58	1
K545	FLOOR SUPPLY BOX TRIPLE NEUTRAL	1

Meter / circuit breaker box



F732 (Single-phase)

F733 (Three-phases)

Application

The customer box is designed to receive a meter and the necessary protection equipment. It can be installed outside or inside the house.

Description

- The box is available in single-phase and three-phase.
- It can accommodate:
 - A 22x58mm circuit breaker (not supplied),
 - A support to receive a meter (not supplied),
 - A DIN rail to receive an earth leakage circuit breaker (not supplied).
- It has a window on the front part allowing the reading of the meter as well as an access hatch to the location of the differential circuit breaker.
- It has 2 entrances equipped with 2 cable grommets allowing watertight cable passage at the bottom of the cabinet.
- It is injected in fiberglass-reinforced synthetic materials offering good resistance to weather conditions (very good protection against UV, humidity and water penetration).
- It can be sealed with a seal or a padlock, thus limiting fraud and access to live parts (not supplied).
- It can be fixed with screws and plugs, or strap (not supplied).

Code	Designation	Weight (kg)	Sales unit
F732	METERING CUSTOMER BOX / SINGLE-PHASE CIRCUIT BREAKER	2.50	1
F733	METERING CUSTOMER BOX / THREE-PHASES CIRCUIT BREAKER	6.60	1

Accessories



U609

Application

The box is part of the control panel board. It is designed to fulfill the individual main branch circuit breaker. It is intended to receive a 22x58 fuse.

Description

- The terminals of this device can receive either copper or aluminum conductors, with a cross section of 6 to 35 mm².
- These products are designed to be used in enclosures placed either outside or inside the home.
- The wide open bases facilitate wiring and limit heating during operation.

Code	Designation	Weight (kg)	Sales unit
U609	UNIPOLAR CUTOUT 22x58	0.157	10

Universal meter board and accessory



K424

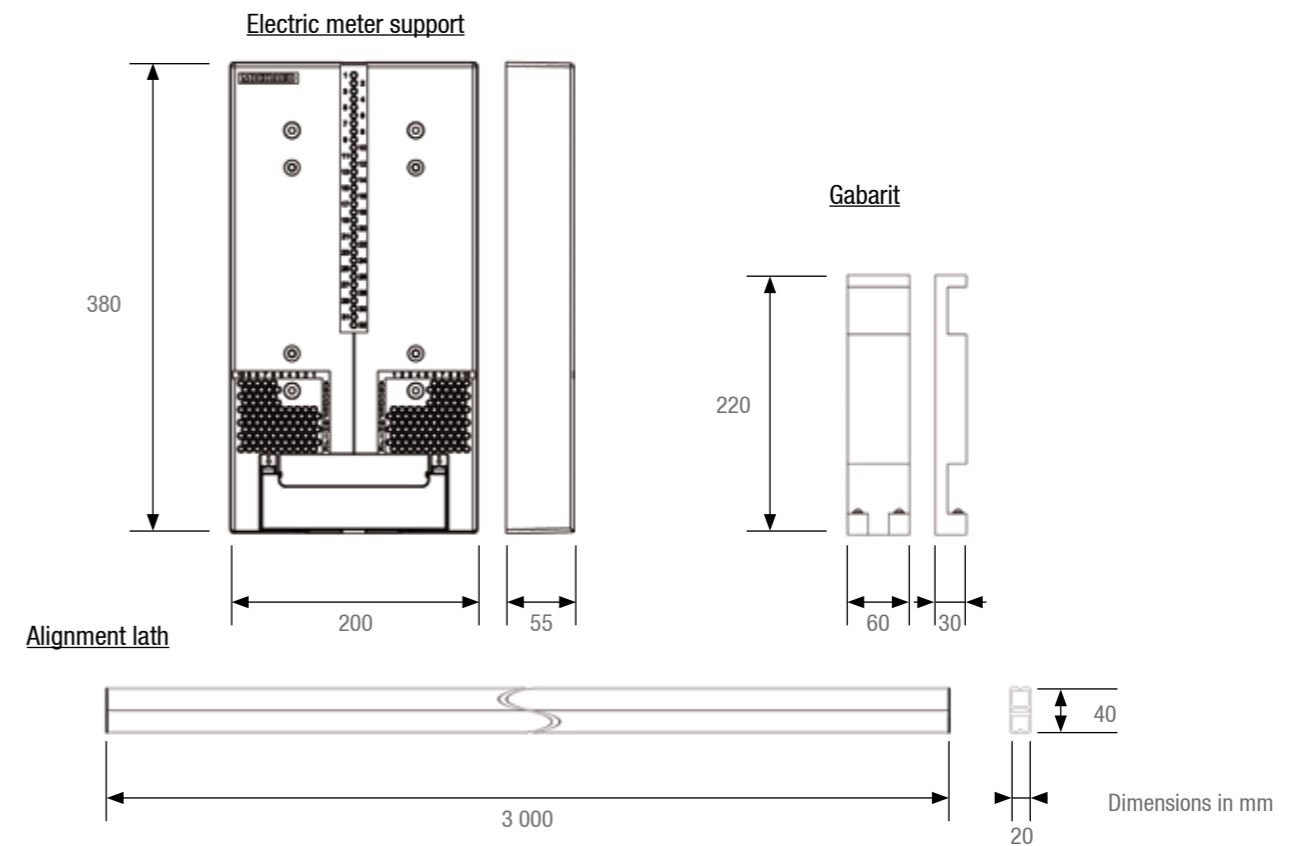
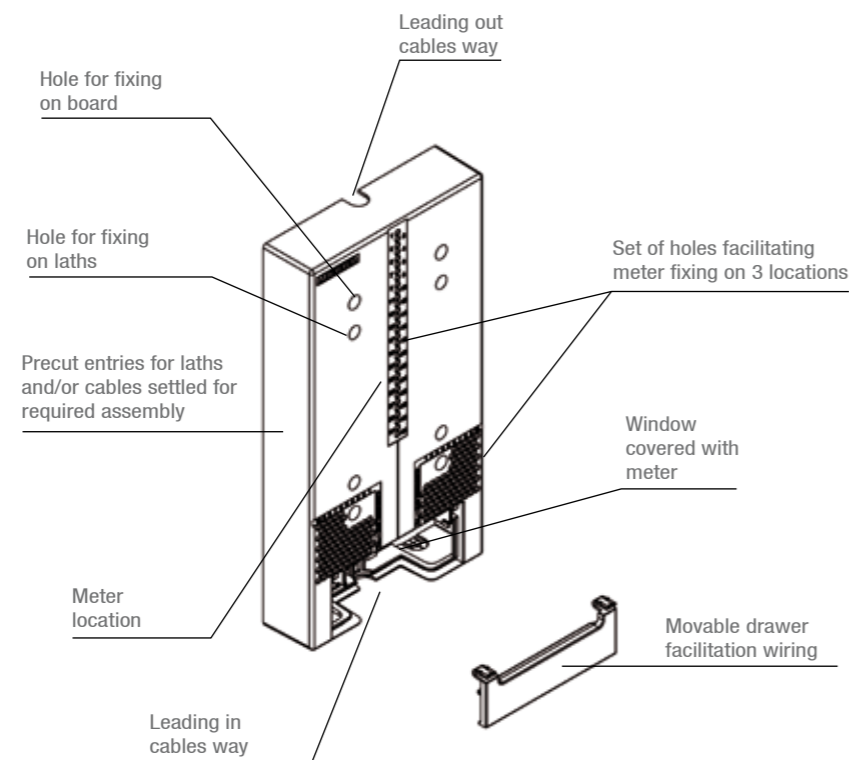
Application

This meter board is used to receive any residential type electric meter whether single phase, three phase or tetrapolar, equipped with a cable cover. It can be combined with pluggable or non-pluggable module type connection equipment.

Description

- The assembly is made of grey synthetic self-extinguishing materials (RAL 9035).
- The board is equipped with a removable clipped cover which is dismantable to make equipment wiring easier.
- The board is vertically fixed to a flat surface and possibly by means of alignment laths (see Accessories).
- When equipped with a tetrapolar meter, the board is IP4X on the front face and IK4.

The board is used to fix meters that meet the criteria of the **DIN 43857** standard.



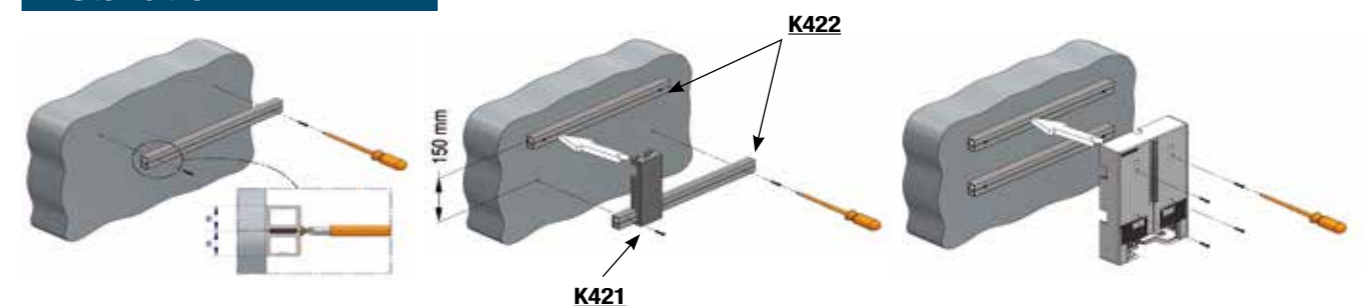
Code	Designation	Weight (kg)	Sales unit
K424	SUPPORT FOR ELECTRIC METER + COVER	0.500	240
K425	COVER (FOR ELECTRIC METER SUPPORT)	0.080	1

Accessories

Code	Designation	Weight (kg)	Sales unit
K422	ALIGNMENT LATH (Length 3m)	1.500	270
K421	GABARIT FOR ALIGNMENT LATH	0.320	1

Comment: if the supporting wall is uneven, the meter board can be mounted using alignment laths. The laths are made from grey PVC. The gabarit makes it easier to assemble the laths and guarantee a centre-to-centre distance of 150mm between laths.

Installation



Meter circuit-breaker board



P475



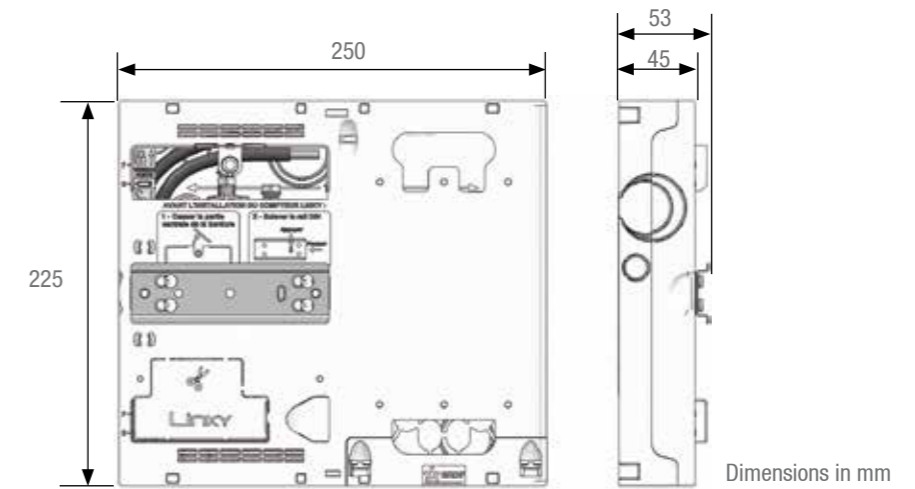
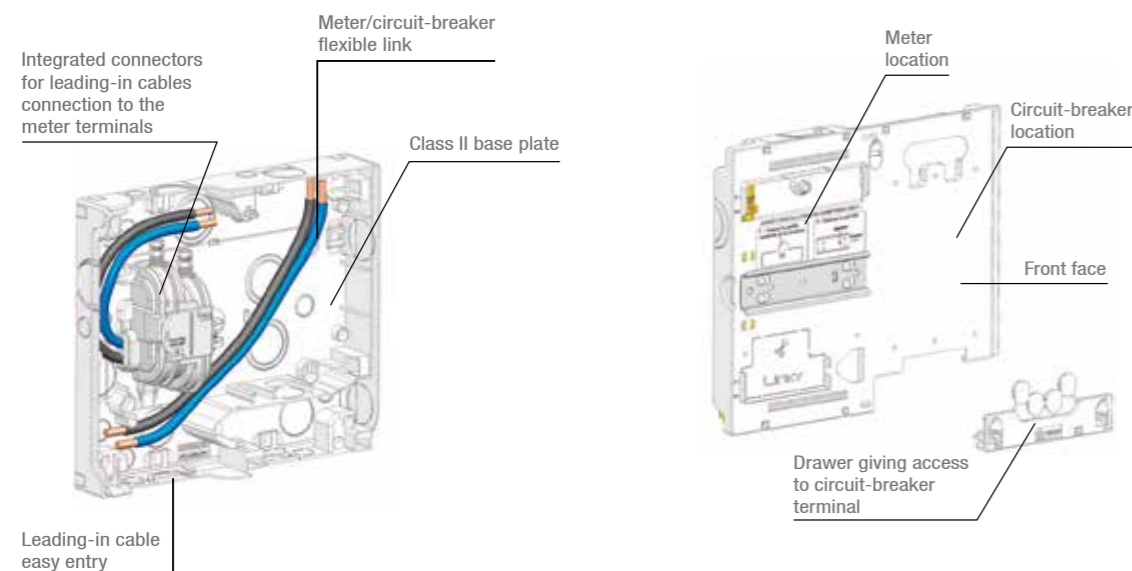
P474

Application

This board is designed to accommodate the single phase electronic meter and the circuit-breaker. It defines the boundary between the energy distributor and the installer private domain. The cover is optional.

Description

- The assembly is made of white synthetic self-extinguishing materials (RAL 9010).
- The front face is equipped with a fixing rail for installing the meter and windows for conductors to run through. It can be dismantled for easier wiring of the devices. The rail can be removed for installing the meter.
- The board is equipped with connectors fixed to the bottom, designed to receive the leading-in cables from the top or the bottom. The terminals use insulation piercing technology and shear heads.
- Connectors have a IPXXB protection degree after installation. The system integrates 16mm² copper links which length enables the connection of any meters with terminals at the top or bottom.
- The terminals downstream of the circuit-breaker are accessible via a drawer in the lower part.
- The meter board can be covered with the P474. The cover is equipped with a board fixing to be attached on the board and a swivel window on the front face to access the meter and circuit breaker.



Dimensions in mm

Code	Designation	Weight (kg)	Sales unit
P475	METER AND CIRCUIT-BREAKER BOARD	0.920	1
P474	COVER FOR METER AND CIRCUIT-BREAKER BOARD	0.340	1

Variants:

Meter circuit-breaker board for three phase electronic meter.



Code	Designation	Weight (kg)	Sales unit
R092	250x550 PANEL FOR THREE PHASE METER + CIRCUIT-BREAKER + COVER	3.080	1
R041	250x550 PANEL FOR THREE PHASE METER + CIRCUIT-BREAKER WITHOUT LOGO	1.920	1
R112	COVER FOR 250x550 PANEL	1.160	1
R043	330x330 PANEL FOR THREE PHASE METER + CIRCUIT-BREAKER WITHOUT LOGO	2.500	1

AMM concentrator data supply kit



AMM concentrator data supply kit (K716)



P070

Application

This kit is designed for the installation of an AMM (Automatic Meter Management) data concentrator in a LV/MV transformer or on a pole depending on the type of network (underground or overhead). These products supply and protect the concentrator.

Description

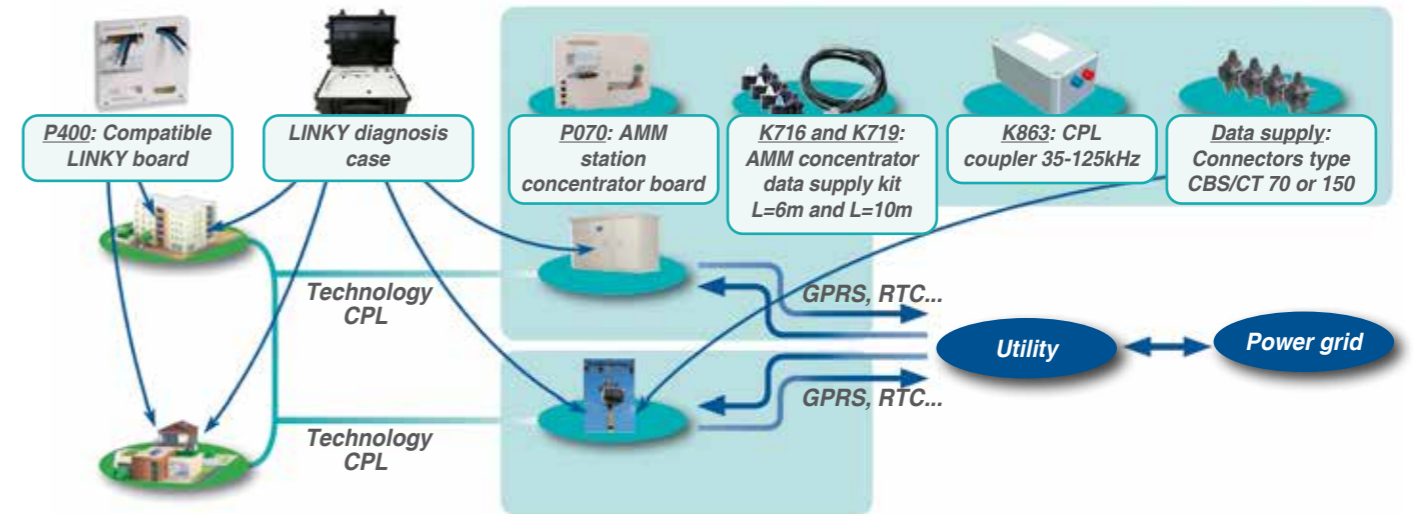
To facilitate the use and management, these products are supplied in packs:

For LV/MV underground stations: Pack Alim L6000 + AMM station connector board

This pack comprises the following elements:

- 1 AMM station concentrator board (P070) of dimensions 377x281 equipped with:
 - 1 DIN rail on which a three phase cutout is fixed
 - 4 links 2.5mm² for the cutout and concentrator connection through a pluggable service end. The concentrator board is delivered with 3 fuses cartridges size 10.3x38, gauge 2A, a neutral tube and 3 screws pre-screwed on the connector board ensuring the concentrator fixing.
- 1 AMM concentrator data supply kit L=6M (K716) or L=10M (K719) comprising:
 - 3 phase connectors and 1 neutral insulation piercing connector with integrated removable fuse protection (3P+1N), 3 fuses size 10x38, rated 10A and a neutral tube.
 - 1 connection link of 6 or 10 meters (depending on the type) between connectors and the concentrator board cutout. It is equipped with quick connection plug on the connectors side end.

Installation



* LINKY: French electricity board Erdf electronic Smart Meter.
For the references P400 and K863, contact us.

Code	Designation	Weight (kg)	Sales unit
K716	AMM CONCENTRATOR DATA SUPPLY KIT + LINKING CABLE L=6m	2.000	1
K719	AMM CONCENTRATOR DATA SUPPLY KIT + LINKING CABLE L=10m	2.400	1
P070	AMM STATION CONCENTRATOR BOARD	1.350	1

Accessories

SEE SHEET
OVERHEAD / Service connector

Modular distribution box

Projecting



Application

This one row modular distribution box is designed to be equipped with devices that protect the customer installation.

Description

- The assembly is made of synthetic materials passing the incandescent wire resistance test at 750°C.
- The cover is white (RAL 9010) and offers a IP30/IK05 protection degree.
- The distribution boxes with 6 and 9 modules are delivered with an IP2X earth system terminal offering 7 inlets/outlets including connection terminals of 16mm² section maximum.
- The distribution boxes with 1 up to 6 modules can be opened using a clip. The distribution box with 9 modules uses screws.

This distribution box meets the criteria of the **NF C 61-910** specification.

Code	Designation	Height (mm)	Length (mm)	Depth (mm)	Weight (kg)	Sales unit
Q591	DISTRIBUTION BOX WITH 1 MODULE	140	30	70	0.080	1
Q592	DISTRIBUTION BOX WITH 2 MODULES	141	48	70	0.100	1
Q594	DISTRIBUTION BOX WITH 4 MODULES	142	84	70	0.140	1
Q596	DISTRIBUTION BOX WITH 6 MODULES	180	120	70	0.250	1
Q599	DISTRIBUTION BOX WITH 9 MODULES	180	190	70	0.360	1

Integrable



Application

This integrable modular distribution box is designed to be equipped with devices that protect the customer installation.

Description

- Several box widths are available: 8, 12, 24 (2 rows of 12) and 36 (3 rows of 12) modules.
- The cover is white and the door is transparent.
- The opening and closing system is ergonomic and the door is reversible.
- The distribution box offers IP40 protection degree (protection against penetration of body superior or equal to 1mm).
- The use temperature range goes from -25°C up to 60°C.
- Used materials are without halogen.

Code	Designation	Height (mm)	Length (mm)	Depth (mm)	Weight (kg)	Sales unit
U635	INTEGRATED MODULAR BOX - 8 MODULES	90	240	90	0.485	20
U636	INTEGRATED MODULAR BOX - 12 MODULES	260	330	90	0.825	12
U637	INTEGRATED MODULAR BOX - 24 MODULES (12x2)	420	330	100	1.655	10
U638	INTEGRATED MODULAR BOX - 36 MODULES (12x3)	570	330	100	2.325	10

Subdivisional circuit breakers



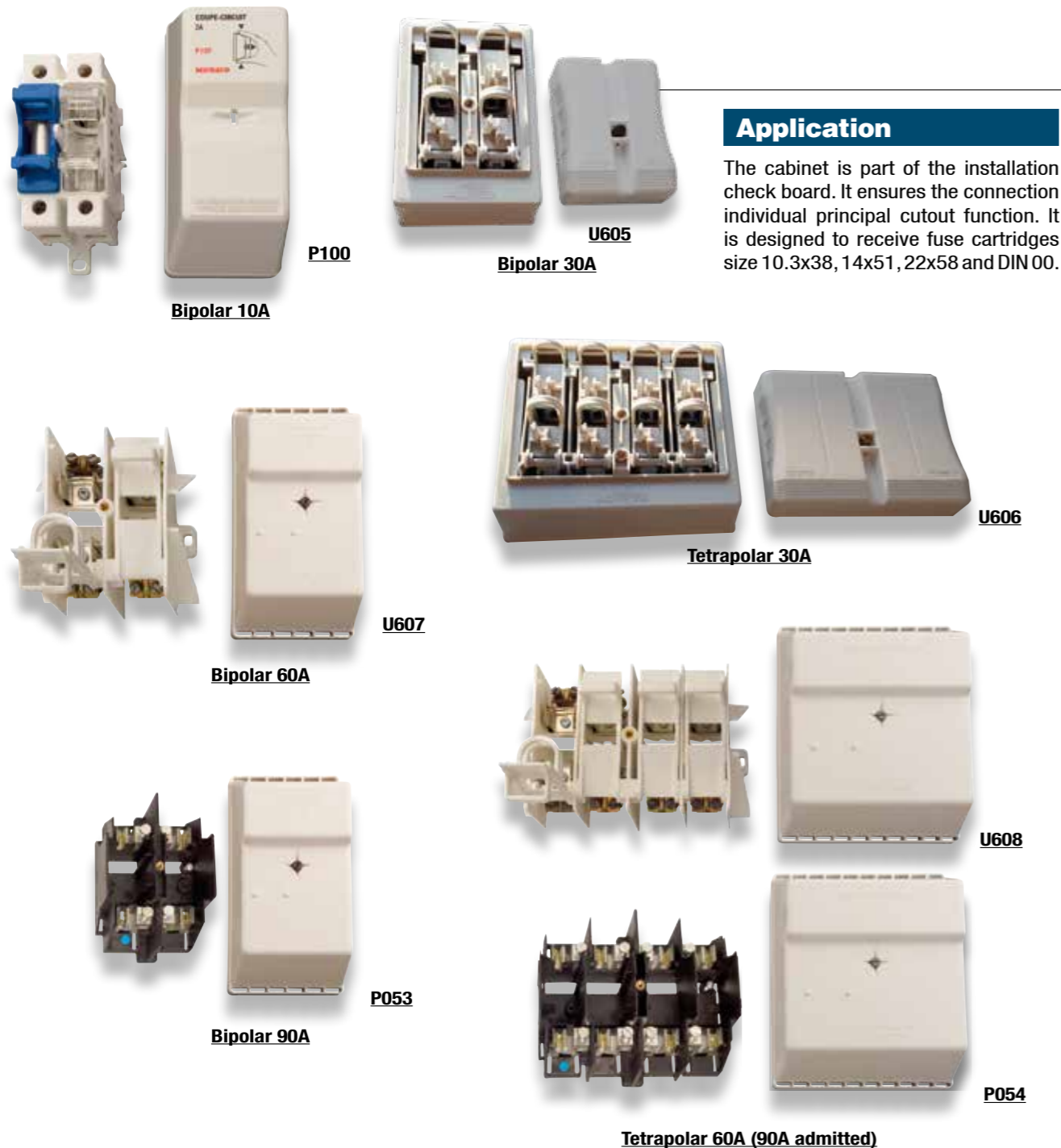
Utilisation

Subdivisional circuit breakers are designed to protect the circuits of the installation. The proposed materials are :

- Neutral Phase 230V,
- A type C trip curve according to EN 60898-1.

Code	Designation	Sales unit
Q530	CIRCUIT BREAKER P+N 2A	10
Q535	CIRCUIT BREAKER P+N 3A	10
Q531	CIRCUIT BREAKER P+N 10A	10
Q532	CIRCUIT BREAKER P+N 16A	10
Q533	CIRCUIT BREAKER P+N 20A	10
Q534	CIRCUIT BREAKER P+N 32A	10

Cutout cabinet



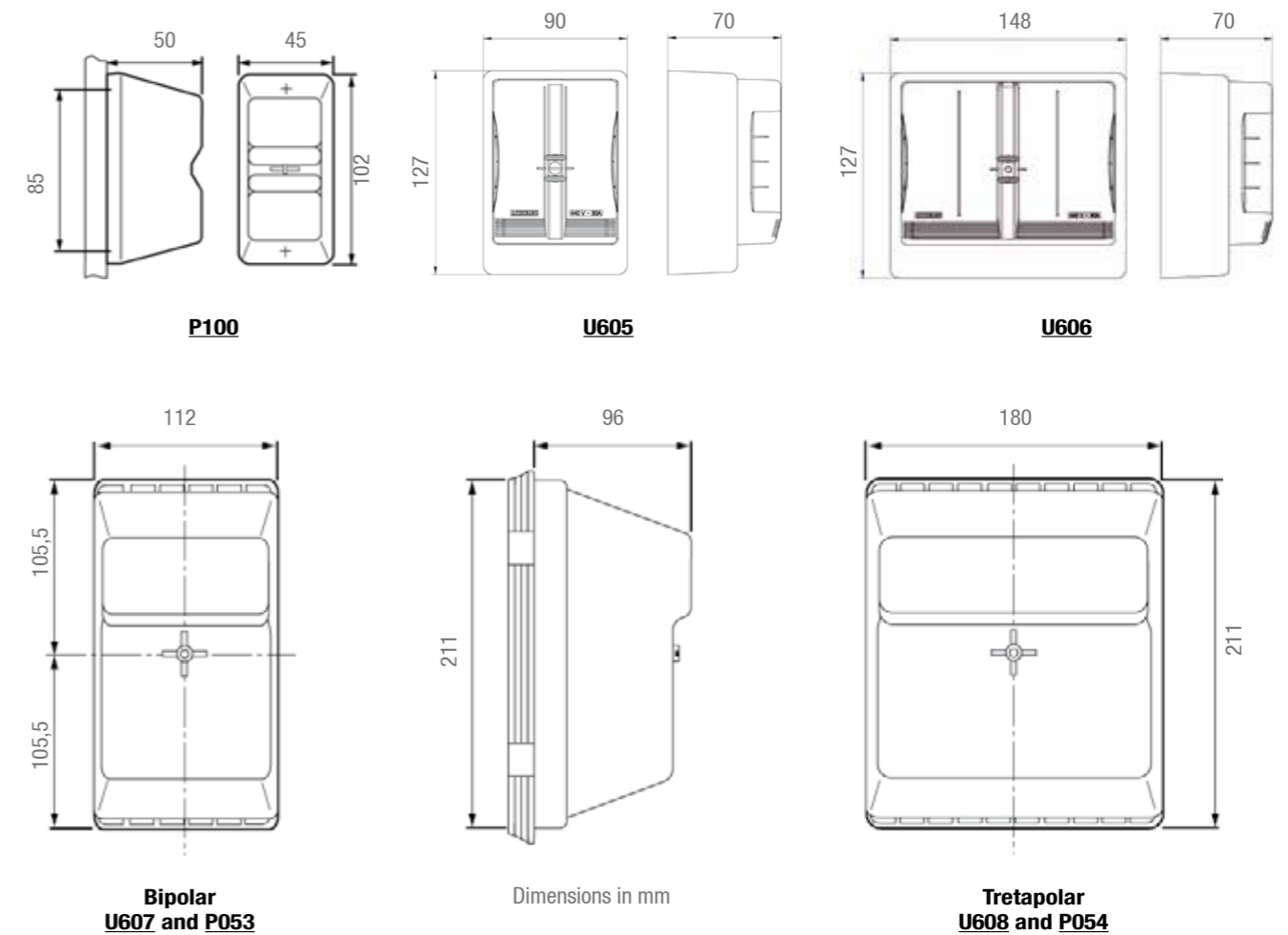
Application

The cabinet is part of the installation check board. It ensures the connection individual principal cutout function. It is designed to receive fuse cartridges size 10.3x38, 14x51, 22x58 and DIN 00.

Description

- The cover is equipped with ventilations and a huge air volume restricting warming.
- The sealing is performed with two 90° notches in the cover and a hole in the tightening screw indexed in the crack for U607, U608, P053, P054, U605 and U606.
- Terminal screws are in stainless steel. They allow an important durability in harsh atmosphere.
- Fuses extraction is performed thanks to a standard handling removable handle.
- Cabinet's cage terminals of the board P100 can receive cable sections from 1.5mm² up to 10mm².
- Cutout terminals, size 14x51, can receive cable sections from 6mm² up to 25mm².
- Cutout terminals, size 22x58 and DIN 00, can receive copper or aluminium cable sections from 6mm² up to 35mm².
- The cabinet P054 allows intensity up to 90A.
- The cabinet P100 is delivered equipped with a neutral tube. The other ones are delivered empty.

The synthetic materials that are used meet the criteria of the **HN 60-E-02** and **HN 60-S-02** specification.



Code	Designation	Weight (kg)	Sales unit
SIZE 10.3x38			
P100	CUTOUT CABINET 2A NEUTRAL TUBE	0.170	1
SIZE 14x51			
U605	CUTOUT CABINET 30A BIPOLAR	0.230	1
U606	CUTOUT CABINET 30A TETRAPOLAR	0.350	1
SIZE 22x58			
U607	CUTOUT CABINET 60A BIPOLAR	0.510	30
U608	CUTOUT CABINET 60A TETRAPOLAR	0.780	18
SIZE 00			
P053	CUTOUT CABINET BIPOLAR 90A	0.600	1
P054	CUTOUT CABINET TETRAPOLAR 60A	0.944	1

Devices are delivered without fuse cartridges.

Option:

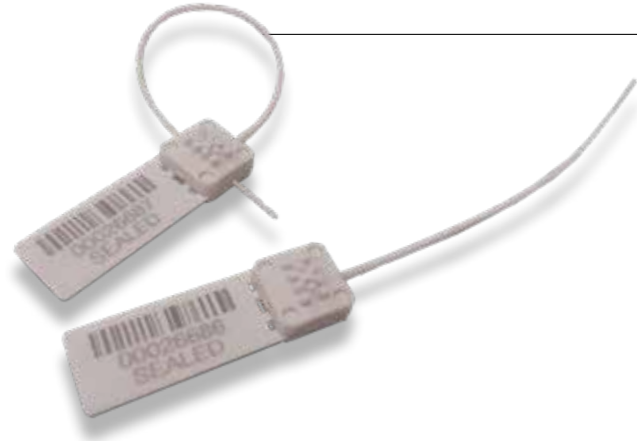
Fuses 10.3x38, 14x51, 22x58 and size 00 are available.

SEE SHEET
PROTECTION / Fuses



Seal

Numbered seal with wire

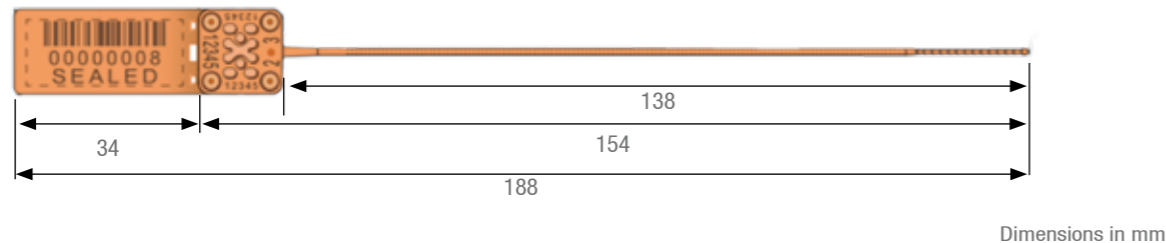


Utilisation

This seal is designed with a fast closing system by means of a locking button. It is specifically designed to be installed on water, gas or electricity meters. The breaking of the link enables to highlight a potential fraud.

Description

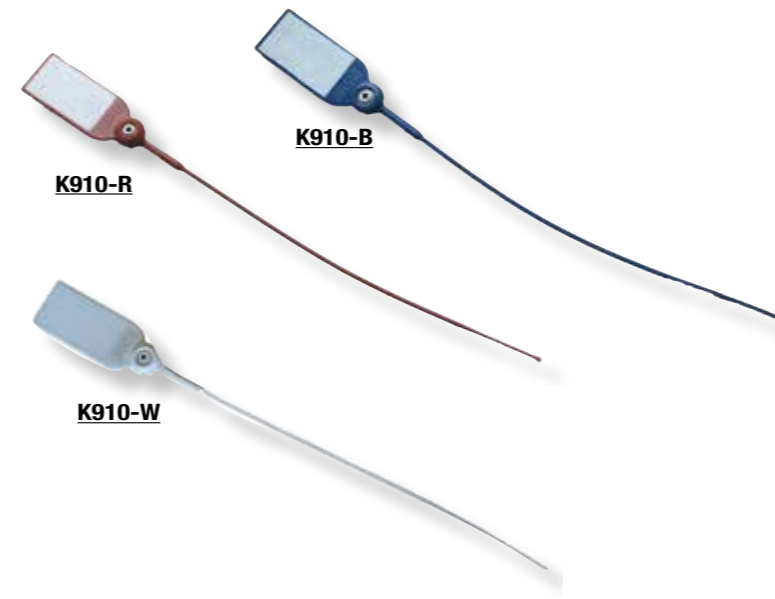
- The seal is made of polyamide (PA), mono-material and recyclable.
- The seal is UV treated.
- The fast closing of the seal is done by means of the locking button and without tools.
- Once closed, the tensile strength is 8kg.
- The link diameter is 1.4mm and it is suitable for small holes and ayelets of a minimum diameter of 1.5mm. The introduction way is not important.
- The seal conception enables to tighten very close to the product from a maximum diameter of 30mm to a total tightening.
- The seal has four areas for marking around the locking button:
 - Three markings comprising 5 digits
 - One marking comprising 2 digits
- The flag is optional (to be specified when ordering).
- The seal identification on the flag is realised through:
 - One barcode to guarantee a certain handling of the information
 - One marking comprising 8 digits



Code	Designation	Length (mm)	Weight (kg)	Sales unit
F010-500	PLASTIC SEAL WITH UNIQUE NUMBER (BAG 500 PIECES)	188	0.420	1

Nota: Several colors are available. Minimum order quantities are 20 bags of 500 pieces.

Plastic seal



Application

This seal is designed with a tail to run through a locking hole. It is used to seal electrical equipment, water meters, gas meters, etc. The breakage of this element highlights possible fraud.

Description

- These seals are made of UV resistant synthetic materials.
- The seal identification is made through:
 - A 1234567 marking type (7 digits consecutive numbering) for F010
 - A permanent marker inscription for K910
- They are implemented manually without using particular tools.
- These seals are available in blue, red, white and black. For other colors, contact us.

Code	Designation	Length (mm)	Weight (kg)	Sales unit
K910-B	BLUE SEAL (BOX OF 100 PIECES)	130	0.240	1
K910-R	RED SEAL (BOX OF 100 PIECES)	130	0.240	1
K910-W	WHITE SEAL (BOX OF 100 PIECES)	130	0.240	1

Sealable screw cover

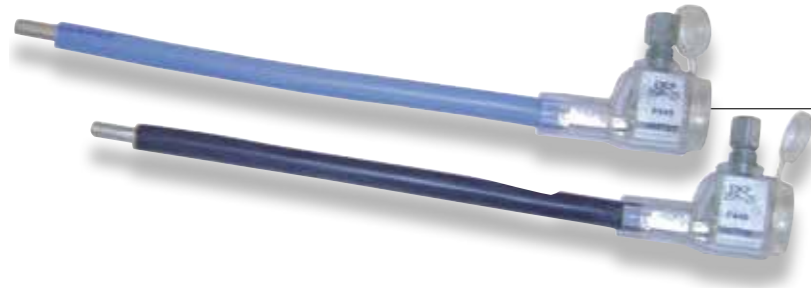


Application

When installing the meter, the anti-fraud system may need to be modified. This sealable screw cover is designed to seal a screw.

Code	Designation	Weight (kg)	Sales unit
P641	SEALABLE SCREW COVER (2mm diameter)	0.002	100
P642	SEALABLE SCREW COVER + 5x30 VBA SCREW	0.006	100
U433	WOOD SCREWS (x100)	-	1
F332	WOOD SCREWS POZIDRIVE (x200)	1.600	1

Insulation piercing end connector EBCP 6-35



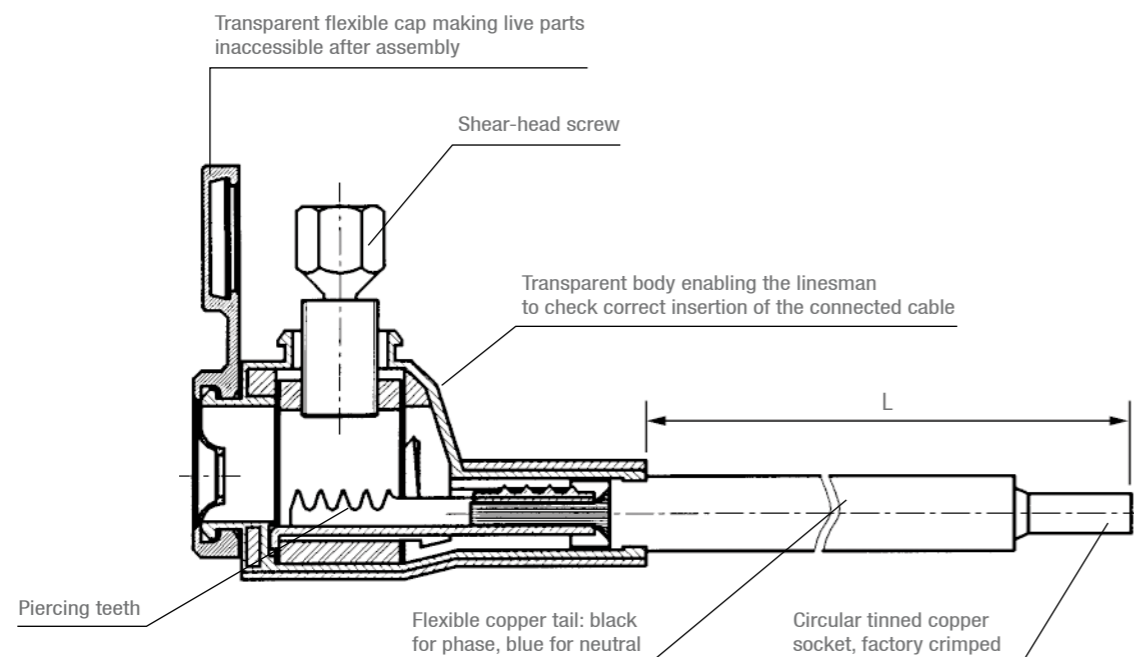
Application

This end connector is used for the connection of leading in cables to electrical equipment terminals (cutouts, electronic meters, ect). It is a universal solution to connect the connection cable and the meter terminals no matter what is the metal or the block nature. It can be fitted on copper or aluminum stranded or solid core conductors.

Description

- The end connector uses the insulation piercing technology (6-35mm²).
- The protection degree is IP2X when it is implemented.
- The maximum power running through the insulation piercing end connector is 63A for 16mm² and 90A for 25mm².
- Low dimensions enable to easily fit the end connector behind the panel in a restricted space.
- Solid teeth ensure connection in extreme environments even under low temperatures.
- The robust material constituting the cover enables it to be held with a pair of pliers during the installation, facilitating the holding.

This end connector meets the criteria of the **H-M24-2011-02598-FR** specification.



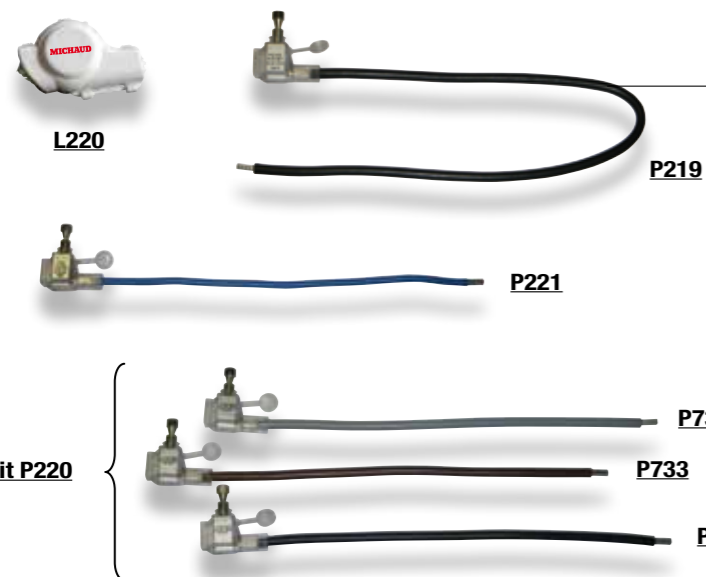
Code	Designation	Out of box length: L (mm)	Capacities (mm ²)	Weight (kg)	Sales unit
P446	EBCP 6-35/16 BLACK L235	235	6-35	0.090	10
P447	EBCP 6-35/16 BLUE L235	235		0.090	10
P648	SET OF 2 EBCP 6-35/16 (1 BLACK + 1 BLUE) L235	235		0.190	1
P651	SET OF 4 EBCP 6-35/16 (3 BLACK + 1 BLUE) L235	235		0.370	1
P222	EBCP 6-35/16 BLACK L500	500	6-35	0.140	1
P223	EBCP 6-35/16 BLUE L500	500		0.140	1
P448	EBCP 10-35/25 BLACK L190	185	10-35	0.100	10
P449	EBCP 10-35/25 BLUE L190	185		0.100	10
P649	SET OF 2 EBCP 10-35/25 (1 BLACK + 1 BLUE) L190	185		0.210	1
P650	SET OF 4 EBCP 10-35/25 (3 BLACK + 1 BLUE) L190	185		0.420	1



Housing

Housing

Insulation piercing end connector EBCP 16-50 Class II

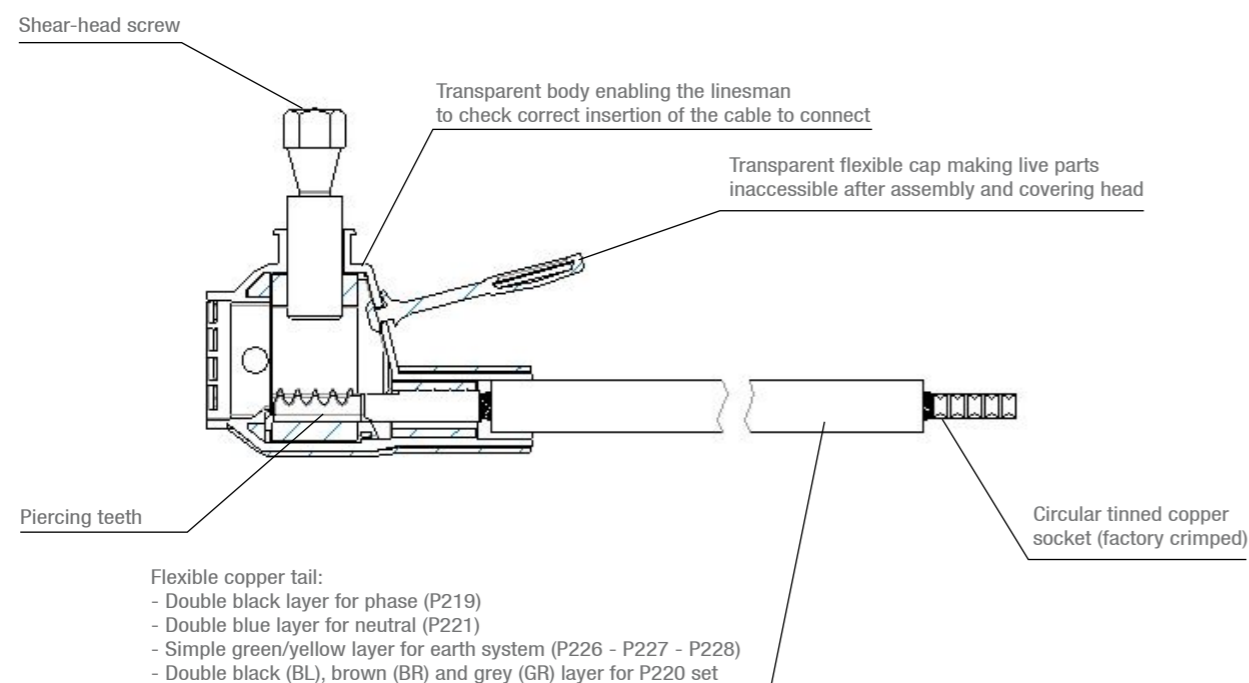


Application

This end connectors range is used for the connection of leading in cables to electrical equipment terminals (cutouts, electronic meters, ect). It is a universal solution to connect the connection cable and the meter terminals no matter what is the metal or the block nature. The end connector can be fitted on sectoral or circular-shaped copper or aluminum stranded or solid core conductors. It provides class II protection using the double insulated colored tail, when equipped with the cover.

Description

- The end connector uses the insulation piercing technology (16-50mm²).
- The protection degree is IP2X when it is implemented.
- The maximum power running through the insulation piercing end connector is 80A.
- Low dimensions enable to easily fit the end connector behind the panel in a restricted space.
- Solid teeth ensure connection in extreme environments even under low temperatures.
- The robust material constituting the cover enables it to be held with a pair of pliers during installation, facilitating holding.
- The synthetic cover ensures a protection class II of the connector body and can be sealed.
- The reference P220 comprises a kit of 3 colored end connectors with black, brown or grey tail.



Option: Class II Setting-up

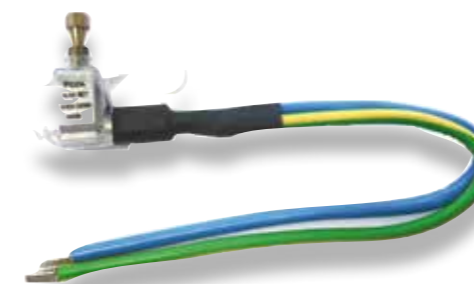
The cover (L220) enables to establish a class II installation.



Code	Designation	Out of box length: L (mm)	Capacities (mm ²)	Weight (kg)	Sales unit
P219	EBCP 50 SECT-16 BLACK L700 CLASS II	700	16-50	0.190	9
P220	SET OF 3 EBCP 50 SECT-16 BL/BR/GR L375	375		0.390	1
P221	EBCP 50 SECT-16 BLUE L375 CLASS II	375		0.130	9
P731	EBCP 50 SECT-16 BLACK L375 CLASS II	375		0.390	100
P732	EBCP 50 SECT-16 GREY L375 CLASS II	375		0.390	100
P733	EBCP 50 SECT-16 BROWN L375 CLASS II	375		0.390	100
L220	EBCPAU COVER CLASS II				0.020

Option:

Insulation piercing end connector for earth systems.



A wide range of insulation piercing end connectors has been designed for earth system:

- P 227 and P 226 with two tails (yellow/green and blue) for connecting and earth system the neutral at the same time,
 - P228 with one tail (yellow/green) for the earth conductor.
- The neutral conductor (blue) has double insulation whereas the earth conductor (yellow/green) has single insulation as it is not considered as a live element (class II not required).

Code	Designation	Out of box length: L (mm) tail	Out of box length: L (mm) earth system	Capacities (mm ²)	Weight (kg)	Sales unit
P226	EBCP P221 + YELLOW/GREEN EARTH SYSTEM L345	375	345	16-50	0.220	9
P227	EBCP P221 + YELLOW/GREEN EARTH SYSTEM L800	375	800		0.330	9
P228	EBCP 50 SECT-16 YELLOW/GREEN L800		800		0.200	9

Reversible stripping end connector EBCD 6-35



P620



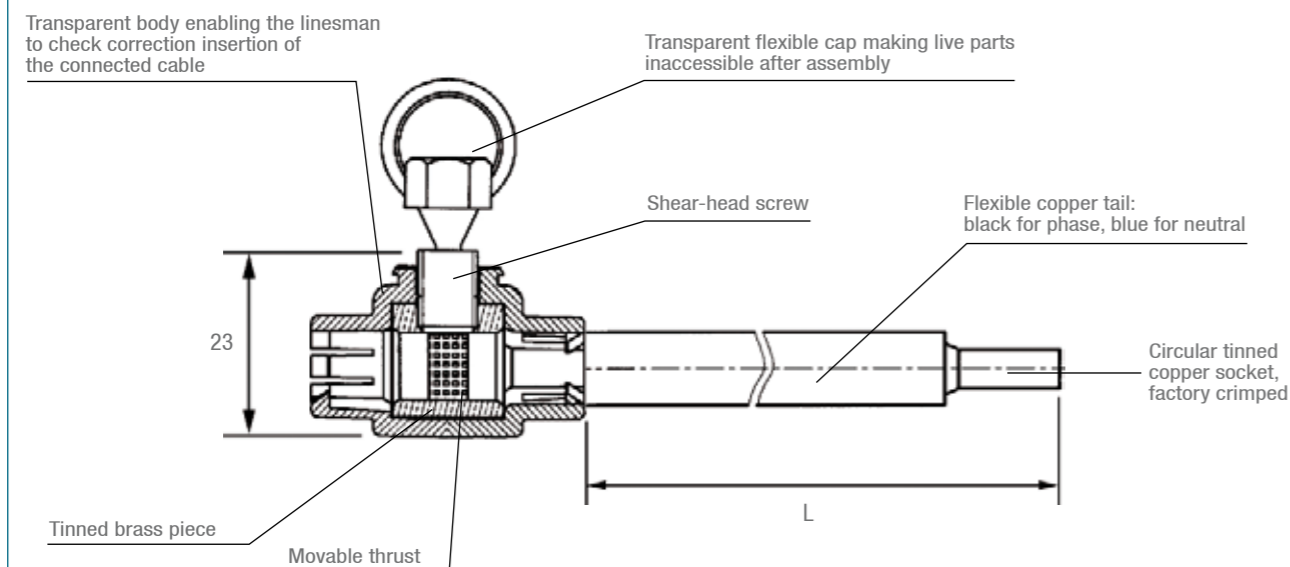
MICHAUD Exclusivity
Patented system

Application

This end connectors range is used for the connection of leading in cables to electrical equipment terminals (cutouts, electronic meters, ect). It is a universal solution to connect the connection cable and the meter terminals no matter what is the metal or the block nature. They can be fitted on copper or aluminum stranded or solid core conductors.

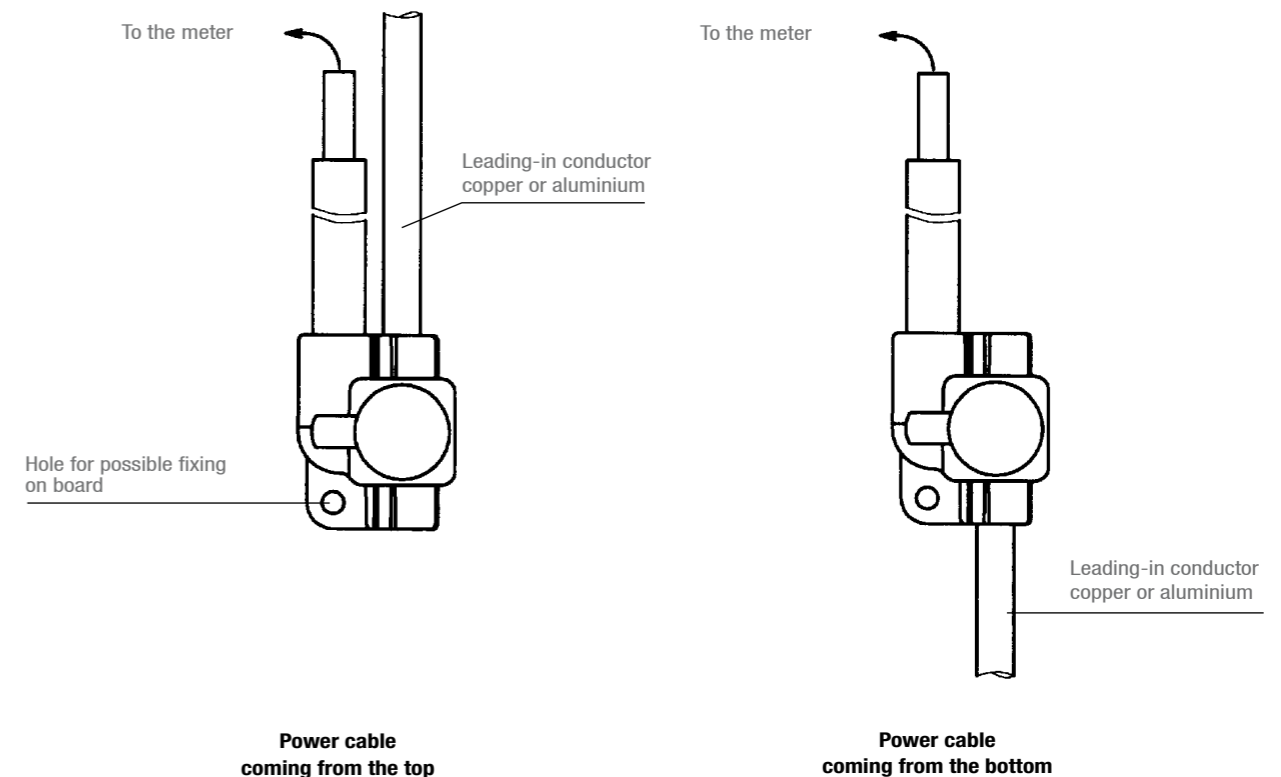
Description

- The end connector uses the stripping technology (6-35mm²).
- The protection degree is IP2X when it is implemented.
- The maximum power running through the stripping end connector is 90A.
- The end connector can be connected in two opposite directions, which overcomes bulky loops in the event of insertion of the power cable from the top.
- Low dimensions enable to easily fit the end connector behind the panel in a restricted space.
- Solid teeth ensure connection in extreme environments even under low temperatures.
- The robust material constituting the cover enables it to be held with a pair of pliers during the installation facilitating the holding.



The benefits:

- + Connection possible from the top or bottom
- + A flexible cap enables to make the tightening screw inaccessible
- + The reversible end connector can either remain floating or be fixed using a 4mm diameter screw



Code	Designation	Out of box length: L (mm)	Capacities (mm ²)	Weight (kg)	Sales unit
P620	SET OF 2 EBCD 35-25 (1 BLACK + 1 BLUE)	185	6-35	0.220	1
P621	SET OF 4 EBCD 35-25 (3 BLACK + 1 BLUE)			0.440	1

Nota: please enquire for any other length.

Flexible linking cable



J045

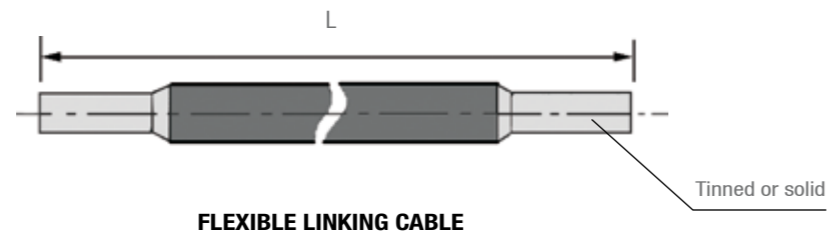
J046

Application

The flexible linking cable is used for the equipment wiring when the rigid stranded core or solid core conductor installation is too difficult.

Description

- The linking cable is a 16mm² or 25mm² flexible copper conductor, multi-stranded of H07 VK type.
- Each end is factory crimped with a tinned copper-bonded socket or a stripped and tinned socket for J412 and J413. The socket is designed for connection to a plate or tunnel terminal, or to an insulation piercing terminal.



- The length L of the link is stated on the right-hand page.

Code	Designation	Conducteur (mm ²)	Length (mm)	Weight (kg)	Sales unit
J045	1 BLUE 16mm ² LINKING CABLE L560	16	560	0.100	10
J046	1 BLACK 16mm ² LINKING CABLE L530	16	530	0.090	10
J047	1 BLUE 16mm ² LINKING CABLE L700	16	700	0.135	10
J048	1 BLACK 16mm ² LINKING CABLE L700	16	700	0.135	10
J041	1 BLUE 16mm ² LINKING CABLE L1200	16	1 200	0.200	10
J042	1 BLACK 16mm ² LINKING CABLE L1200	16	1 200	0.210	10
J808	SET OF 2 16mm ² LINKING CABLES (1 BLUE + 1 BLACK)	16	560+530	0.215	1
J809	SET OF 4 16mm ² LINKING CABLES (1 BLUE + 3 BLACK)	16	560+3x440	0.370	1
J412	BLUE CABLE 16VK L500	16	500	0.085	200
J413	BLUE CABLE 16VK L500	16	500	0.085	200
J132	1 BLUE 25mm ² LINKING CABLE L700	25	700	0.185	5
J133	1 BLACK 25mm ² LINKING CABLE L700	25	700	0.180	5

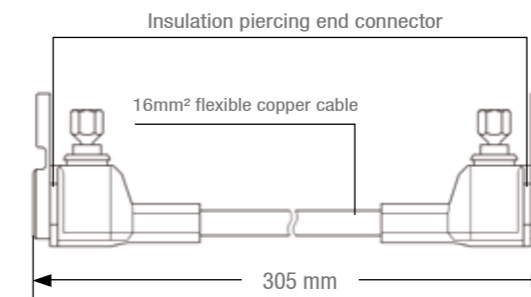
Variants:

Two insulation piercing end connectors can be connected to the ends of the flexible linking cable for connection to other conductors.

Possible sections for conductors to be connected:

- Aluminium solid core conductors: 16M, 25M, 35M, 50M *
- Aluminium or copper rigid stranded core conductors: 10mm², 16mm², 25mm²,
- Copper multi-stranded conductors: 10mm², 16mm², 25mm² (in this case, the connection must be carried out only if the end of the conductor has been compressed).

* M means that the conductor is solid.



Code	Designation	Weight (kg)	Sales unit
P660	SET OF 2 16mm ² EBCPAU LINKING CABLE SINGLE 2 PIERCINGS	0.260	1
P662	SET OF 4 16mm ² EBCPAU LINKING CABLE THREE-PHASE 2 PIERCINGS	0.505	1

Reducing end connector

Service

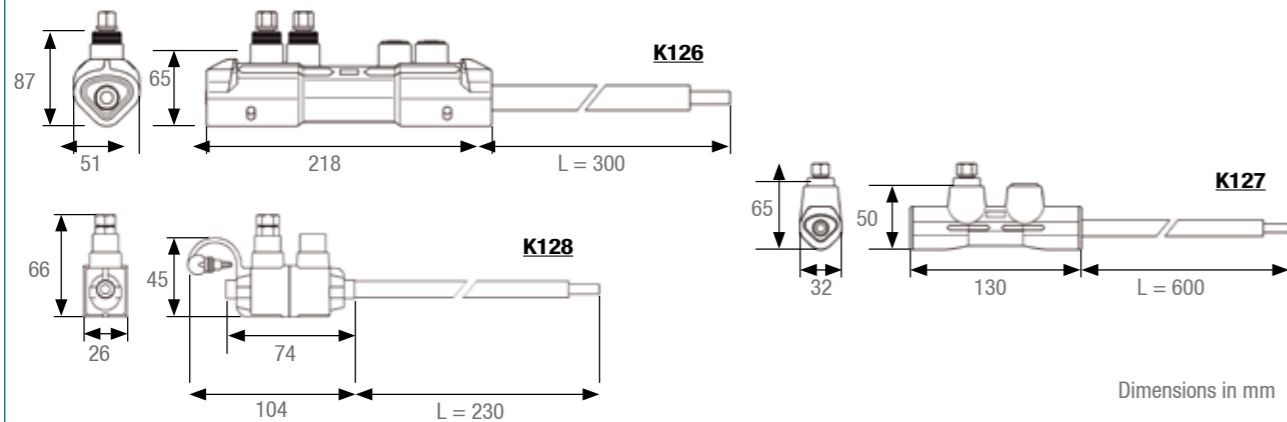


Application

This end connector is used for connecting a conductor with a given section into a terminal with a smaller one. It is usually used for industrial supplies and long-line supplies.

Description

- The dielectric strength in water is greater than 6kV.
- The flexible copper tails enable direct connection to the equipment.
- The conductor connection terminal is of insulation stripping type.
- This end connector can be used on aluminium or copper conductors.

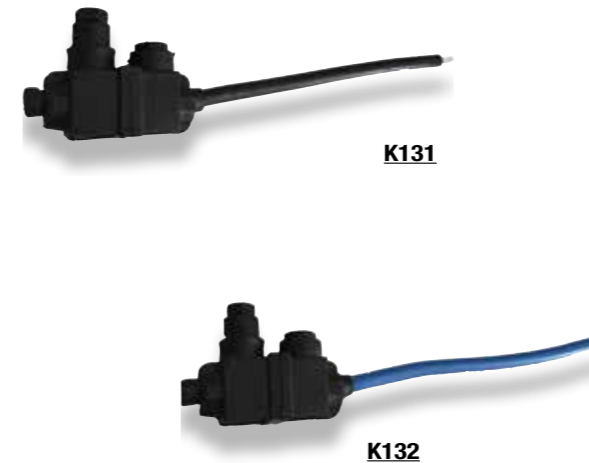


Dimensions in mm

Code	Designation	Tail length (mm)	Leading-in capacities Al-Cu (mm ²)	Tail section (mm ²)	Weight (kg)	Sales unit
K126	STRIPPING REDUCING END CONNECTOR 95-240	300	Round 95-150 Sectoral 95-240	50	0.780	4
K127	STRIPPING REDUCING END CONNECTOR 25-95	600	Round 25-95 Sectoral 50-95	25	0.330	5
K128	STRIPPING REDUCING END CONNECTOR 6-50M	230	Round 6-35 Round 16M-50M	25	0.170	2

Note: For other adaptations, please contact us.

Fraud-preventing service connection

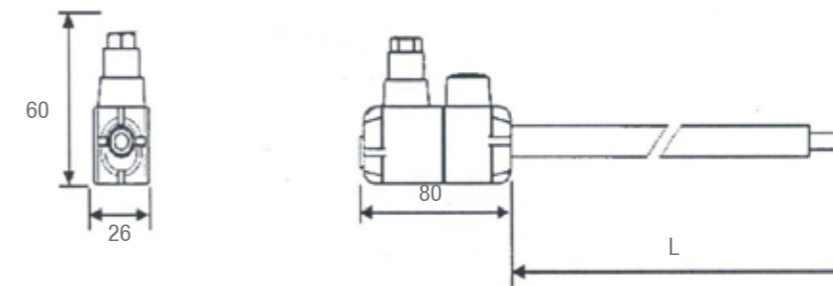


Application

This end connector is used for connecting a service conductor to an equipment terminal. Four models are available with black tail for Phase connection (K129 and K131) or blue for Neutral connection (K130 and K132). This solution is used to secure the outdoor connection to equipment terminals.

Description

- The dielectric strength of the end connector in water is greater than 6kV.
 - The service end connector is designed for connection to 6-35mm² section copper or aluminium conductors.
 - A 16mm² insulated flexible copper tail enables connection to equipment terminals (meter circuit-breaker).
 - The conductor connection terminal is of insulation piercing type. The shear head ensures tightening efficiency.
- Note: to prevent dismantling of the end connector with risk of fraud, none of the permanent screw heads is accessible.



*Dimensions in mm
L= 220 (K131 and K132)
L= 520 (K129 and K130)

Code	Designation	Tail length (mm)	Leading-in capacities Al-Cu (mm ²)	Tail section (mm ²)	Weight (kg)	Sales unit
K131	PIERCING REDUCING END CONNECTOR 6-50M PHASE L300	220	6-35 16-50M	16	0.150	16
K132	PIERCING REDUCING END CONNECTOR 6-50M NEUTRAL L300	220	6-35 16-50M	16	0.150	16
K129	PIERCING REDUCING END CONNECTOR 6-50M PHASE L600	520	6-35 16-50M	16	0.190	12
K130	PIERCING REDUCING END CONNECTOR 6-50M NEUTRAL L600	520	6-35 16-50M	16	0.190	12



INSTALLATION

These products must be implemented and used in **compliance with the applicable regulations** with a skilled, qualified professional undertaking to do so following the generally accepted rules of the trade.

For **live-line** implementation or handling, the electrician must comply with the requirements for live-line work conditions and must be equipped with the necessary personal protection equipment. The implementation temperature limits are: -10°C to +40°C.

Live-line work is carried out under the responsibility of the ordering customer in compliance with the applicable rules.

Before powering up the equipment, all the required verifications must be carried out.



TOOLS

The product should be installed and used with **suitable tools**.

The screw heads should be tightened with the appropriate tool: **Spanner** for hexagonal cap screws, **flat screwdriver** for slotted screw heads of the right size, **Phillips screwdriver** for cruciform screw heads, **HSHC screw head (awls)** for hollow hexagonal screw heads, etc. The screw heads with no torque-limiting device must be tightened to the recommended torque and must not be tightened again.



RECOMMENDATIONS

The installation instructions must be read carefully before using the product.

The product must be used and implemented in compliance with these recommendations for use and installation instructions. It must be used for the applications for which it was defined by the operator/manager of the network and on an electrical installation that is compliant and compatible with the product.

Never exceed the capacities indicated on the device and in the instructions sheet.

Unless explicitly indicated, products are designed for no-load connection.



ENVIRONMENT

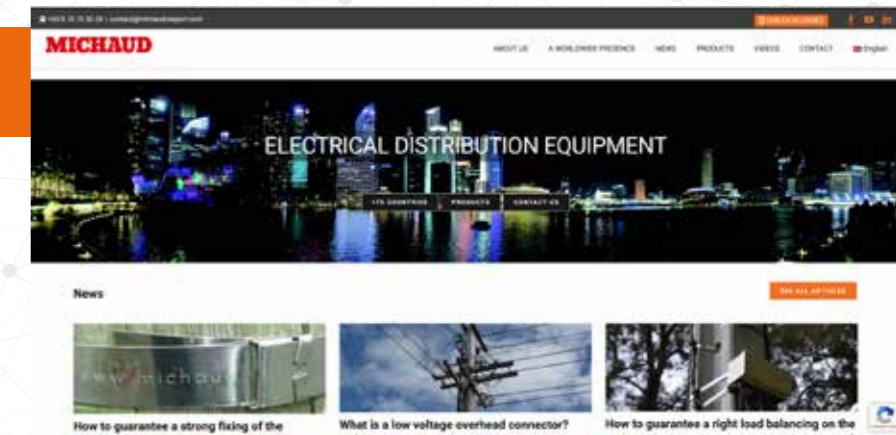
Please group your waste together and follow the recycling and destruction instructions before leaving the worksite.

FOLLOW US

WEBSITE



www.michaud-export.com



LINKEDIN

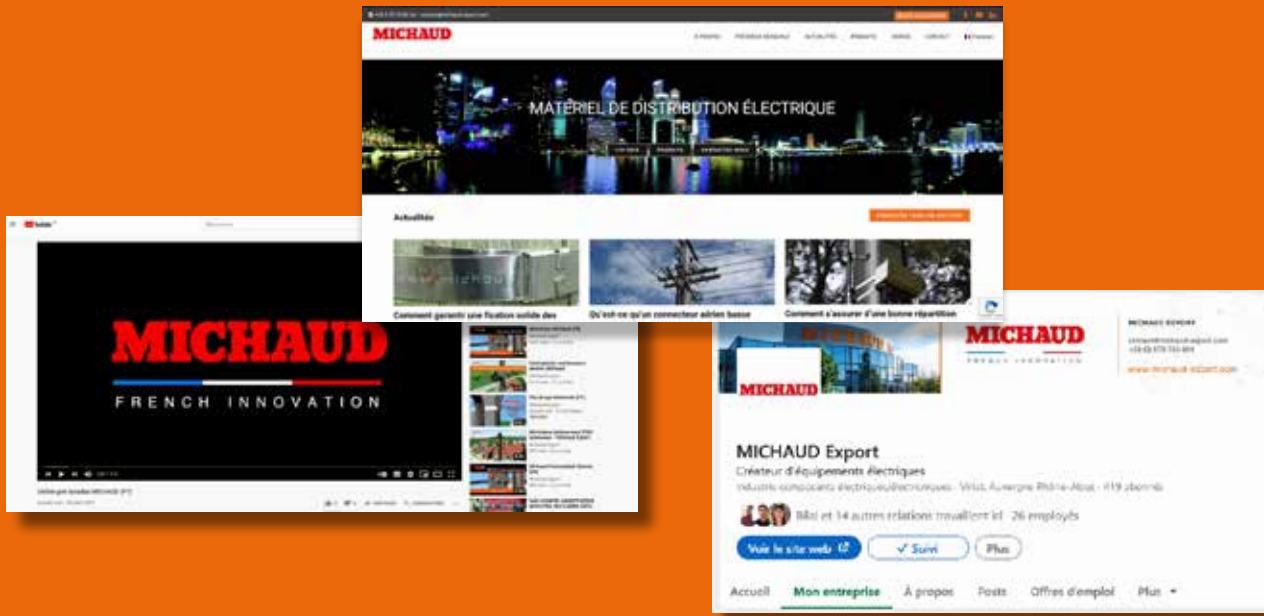
Suivez notre actualité :



YOUTUBE

Découvrez nos vidéos :





Découvrez notre site Internet
www.michaud-export.com

International expert in electrical distribution, **Michaud Export** designs, develops and implements reliable systems reducing maintenance operations on distribution networks.

As the architect of your solution, the company focuses on on-going innovation and leverages on the worldwide renowned expertise of the 250 employees at **Michaud Group**, leader in the industry for systems and connection fittings for electrical installations.

Michaud Export

499, Rue du Revermont
ZAC La Cambuse
01440 Viriat
France
Tél +33 (0)9 70 75 50 24
contact@michaud-export.com
www.michaud-export.com

MICHAUD