

# Strap and anti-climbing buckles

## Strap

EN 10088 CE NF



**MICHAUD**

### Application

This stainless steel strap is mainly used to fix the suspension or anchoring clamp brackets on all types of poles (wooden, metal or concrete).

### Description

- This strap packaged in a 50m winder is available in four dimensions :
  - \* 10 x 0.4mm
  - \* 10 x 0.7mm
  - \* 20 x 0.4mm
  - \* 20 x 0.7mm
- The strap is made of stainless steel.
- The strap is delivered in a 50m roll inside a strengthened cardboard winder.
- The strap edges are deburred.

### References

Code	Designation	Weight (kg)	Sales unit
K 940	50m CARDBOARD WINDER STAINLESS STEEL STRAP EC 10x0.4mm	1.800	5
K 941	50m CARDBOARD WINDER STAINLESS STEEL STRAP EC 10x0.7mm	2.800	5
K 942	50m CARDBOARD WINDER STAINLESS STEEL STRAP EC 20x0.4mm	3.250	5
K 943	50m CARDBOARD WINDER STAINLESS STEEL STRAP EC 20x0.7mm	5.960	5

### Option :

Synthetic materials winder is also available.



Code	Designation	Weight (kg)	Sales unit
K 945	50m WINDER STAINLESS STEEL STRAP EC 10x0.4mm	1.850	5
K 946	50m WINDER STAINLESS STEEL STRAP EC 10x0.7mm	2.950	5
K 947	50m WINDER STAINLESS STEEL STRAP EC 20x0.4mm	3.450	5
K 948	50m WINDER STAINLESS STEEL STRAP EC 20x0.7mm	5.800	5

## Tools



### Description

The carrying case with ergonomic inside trim is made of synthetic material. It includes a cutting tool, binding tool and buckles (to be ordered separately).

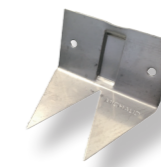
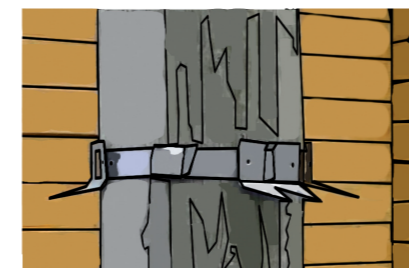
### Implementation

- Cut the required length of strap using the cutting tool.
- Fix the strap around the pole and bracket using a binding tool and attach a buckle.
- Keep the cutting tool and binding tool in the suitable carrying case.

### References

Code	Designation	Weight (kg)	Sales unit
L 950	SET OF 100 BUCKLES EC FOR 10mm STRAP	0.360	1
L 951	SET OF 100 BUCKLES EC FOR 20mm STRAP	0.610	1
K 960	BINDING TOOL RATCHET TYPE FOR STRAP	1.950	1
K 961	CUTTING TOOL FOR STRAP	0.550	1
K 963	CARRYING CASE FOR STRAP TOOLS	0.550	1

## Anti-climbing buckles



**MICHAUD**

### Application

These stainless steel buckles are fixed thanks to the strap to prevent climbing on the pole and the fraud attempt.

### References

Code	Designation	Weight (kg)	Sales unit
K 956	SET OF 25 ANTI-CLIMBING STAINLESS STEEL BUCKLES	0.570	1



Implementation video available on [www.michaud-export.com](http://www.michaud-export.com)  
(tab Documentation > Implementation videos)

